

## PRODUCT DATA SHEET

---

Part number 10029LG

---

EAN 4015609173952

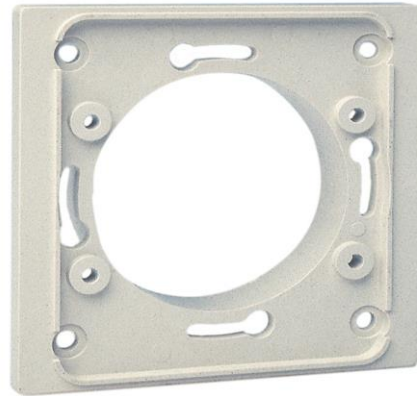
Manufacturer WALTHER-WERKE

WEEE-Reg.-Number: DE 22131895

### Product description

---

MONDO cover plate, small version, two-piece in light grey



Similar image

### Detailed product description

---

WALTHER cover plate  
 from the MONDO series  
 small version  
 two-piece  
 in light grey  
 IP44

### Ordering Information

---

Order unit	Piece
Customs number	85366990
Net weight	0,033 kg
Packing quantity (VPE)	10
Length of the packaging	0,19 m
Width of the packaging	0,1 m
Depth of the packaging	0,118 m
Gross weight(VPE)	0,397 kg

### Classification system

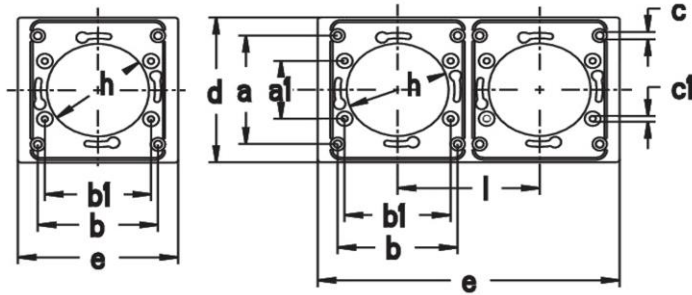
---

Classification system	ETIM_6.0
ETIM Class	EC000007

### Technical product data

Number of units	2
Mounting direction	Horizontal and vertical
Number of units horizontal	2
Number of units vertical	2
Suitable for flush-mounted installation	True
Suitable for floor box	True
Suitable for wall duct	True
Suitable for built-in installation	True
Flat surface model	True
Material quality	Thermoplastic
Material	Plastic
Halogen free	True
Surface protection	Untreated
Surface finishing	Glossy
Colour	Grey
RAL-number (akin)	7035
Degree of protection (IP)	IP44
Type of fastening	Screw mounting
Width	151 mm
Height	80 mm
Depth	5 mm
Built-in width	151 mm
Built-in height	80 mm
Diameter bore hole (opening)	51 mm

### Dimension sheet



Art.-Nr.	10 028	10 029
a	60	60
a1	32	32
b	60	60
b1	53	53
c	4,2	4,2
c1	3,2	3,2
d	80	80
e	80	151
h	51	51
l	/	71