

PRODUCT DATA SHEET

Part number 11601

EAN 4015609007295

Manufacturer WALTHER-WERKE

WEEE-Reg.-Number: DE 22131895

Product description

NORVO panel socket straight 32A 2P 12h for low voltage with flange 75x75mm



Similar image

Detailed product description

WALTHER Panel socket 32A 2P 42V 12h IP44
 low-voltage connector from the NORVO series
 straight
 made from PA6 material
 in purple
 flange 75x75mm
 fixing center 60x60mm

Ordering Information

Order unit	Piece
Customs number	85366990
Net weight	0,115 kg
Packing quantity (VPE)	10
Length of the packaging	0,31 m
Width of the packaging	0,195 m
Depth of the packaging	0,14 m
Gross weight(VPE)	1,298 kg

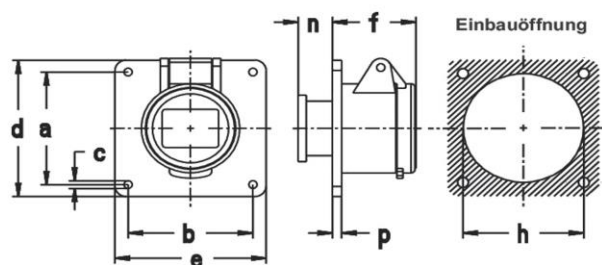
Classification system

Classification system	ETIM_6.0
ETIM Class	EC001317

Technical product data

IEC-amperage	32 A
Amperage acc. UL/CSA (for UL-version)	30 A
Number of poles	2
Voltage acc. EN 60309-2	40-50 V (50+60 Hz) white
Clock hour position	12 h
Identification colour	White
Degree of protection (IP)	IP44
Connection system	Screwed terminal
Angle of plug	Straight
Material	Plastic
Military model	False
Flange size vertical	75 mm
Drill hole distance vertical	60 mm
Flange size horizontal	75 mm
Drill hole distance horizontal	60 mm

Dimension sheet



Amp.	16		32	
Pole	2	3	2	3
a	60	60	60	60
b	60	60	60	60
c	4,2	4,2	4,2	4,2
d	75	75	75	75
e	75	75	75	75
f	42	42	42	42
h	40	40	40	40
n	18	18	18	18
p	4	4	4	4

Befestigungsmaß = a + b, Flanschmaß = d + e