

PRODUCT DATA SHEET

Part number **116407**

EAN **4015609009947**

Manufacturer **WALTER-WERKE**

WEEE-Reg.-Number: **DE 22131895**

Product description

MONDO wall socket surface-mounted 16A 4P 7h
 in light grey



Similar image



Detailed product description

WALTER Wall socket 16A 4P 500V 7h IP44
 from the MONDO series
 made from PA6 material
 surface-mounted
 in light grey (RAL 7035)
 outer dimensions 98x64.3
 The flat cover allows a low housing height
 and is therefore suitable for prestigious areas.

Ordering Information

| | |
|-------------------------|----------|
| Order unit | Piece |
| Customs number | 85366990 |
| Net weight | 0,32 kg |
| Packing quantity (VPE) | 5 |
| Length of the packaging | 0,31 m |
| Width of the packaging | 0,255 m |
| Depth of the packaging | 0,15 m |
| Gross weight(VPE) | 1,796 kg |

Certificates

| | | |
|-------------------|-----------------------|---|
| VDE certification | 123017 |  |
| EAC certification | BY112.02.01.020 06089 |  |

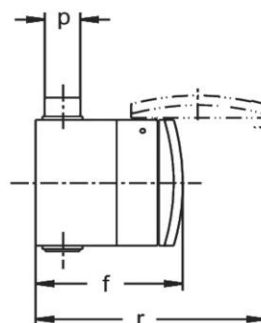
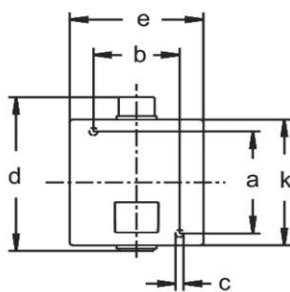
Classification system

| | |
|-----------------------|----------|
| Classification system | ETIM_6.0 |
| ETIM Class | EC001318 |

Technical product data

| | |
|-------------------------|------------------------|
| Current supply | CEE 16 A |
| Number of poles | 4 |
| Voltage acc. EN 60309-2 | 500 V (50+60 Hz) black |
| Clock hour position | 7 h |
| Identification colour | Black |
| Construction type | Wall mounted socket |
| Configuration | Closed cover |
| Colour | Grey |
| RAL-number | 7035 |

Dimension sheet



| Amp. | 16 | | | 32 | | |
|------|------|------|------|------|------|------|
| Pole | 3 | 4 | 5 | 3 | 4 | 5 |
| a | 73 | 73 | 73 | 73 | 73 | 73 |
| b | 58 | 58 | 58 | 58 | 58 | 58 |
| c | 5,5 | 5,5 | 5,5 | 5,5 | 5,5 | 5,5 |
| d | 114 | 114 | 114 | 114 | 114 | 114 |
| e | 90 | 90 | 90 | 90 | 90 | 90 |
| f | 92 | 92 | 92 | 98 | 98 | 98 |
| k | 90 | 90 | 90 | 90 | 90 | 90 |
| n | 1,5 | 1,5 | 1,5 | 1,5 | 1,5 | 1,5 |
| p | 8/20 | 8/20 | 8/20 | 8/20 | 8/20 | 8/20 |
| r | 150 | 150 | 150 | 160 | 160 | 160 |