

## PRODUCT DATA SHEET

---

Part number **116509**

EAN	4015609010028
Manufacturer	WALTER-WERKE
WEEE-Reg.-Number:	DE 22131895

### Product description

---

MONDO wall socket surface-mounted 16A 5P 9h  
 in light grey



Similar image

### Detailed product description

---

WALTER Wall socket 16A 5P 230V 9h IP44  
 from the MONDO series  
 made from PA6 material  
 surface-mounted  
 in light grey (RAL 7035)  
 outer dimensions 98x64.3  
 The flat cover allows a low housing height  
 and is therefore suitable for prestigious areas.



### Ordering Information

---

Order unit	Piece
Customs number	85366990
Net weight	0,328 kg
Packing quantity (VPE)	5
Length of the packaging	0,31 m
Width of the packaging	0,255 m
Depth of the packaging	0,15 m
Gross weight(VPE)	1,836 kg

### Certificates

---

VDE certification	123017	
EAC certification	BY112.02.01.020 06089	

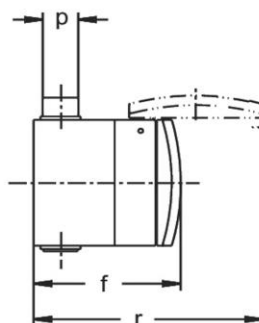
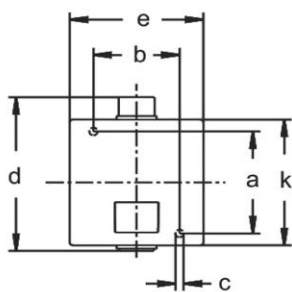
## Classification system

Classification system	ETIM_6.0
ETIM Class	EC001318

## Technical product data

Current supply	CEE 16 A
Number of poles	5
Voltage acc. EN 60309-2	230 V (50+60 Hz) blue
Clock hour position	9 h
Identification colour	Blue
Construction type	Wall mounted socket
Configuration	Closed cover
Colour	Grey
RAL-number	7035

## Dimension sheet



Amp.	16			32		
Pole	3	4	5	3	4	5
a	73	73	73	73	73	73
b	58	58	58	58	58	58
c	5,5	5,5	5,5	5,5	5,5	5,5
d	114	114	114	114	114	114
e	90	90	90	90	90	90
f	92	92	92	98	98	98
k	90	90	90	90	90	90
n	1,5	1,5	1,5	1,5	1,5	1,5
p	8/20	8/20	8/20	8/20	8/20	8/20
r	150	150	150	160	160	160