

## PRODUCT DATA SHEET

---

Part number 11705

---

EAN 4015609160242

Manufacturer WALTHER-WERKE

WEEE-Reg.-Number: DE 22131895

### Product description

---

MONDO panel socket straight 32A 2P 11h for low voltage with flange 80x70mm



Similar image

### Detailed product description

---

WALTHER Panel socket 32A 2P 42V 11h IP44  
 low-voltage connector from the MONDO series  
 made from PA6 material  
 flange 80x70mm  
 fixing center 53x32mm  
 for channel installation

### Ordering Information

---

Order unit	Piece
Customs number	85366990
Net weight	0,144 kg
Packing quantity (VPE)	10
Length of the packaging	0,385 m
Width of the packaging	0,19 m
Depth of the packaging	0,18 m
Gross weight(VPE)	1,642 kg

### Classification system

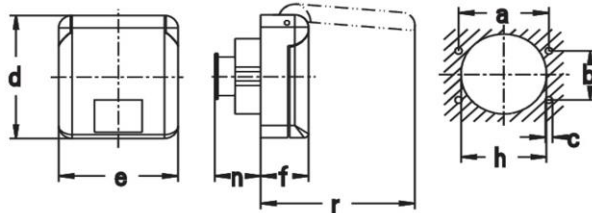
---

Classification system	ETIM_6.0
ETIM Class	EC001318

### Technical product data

Current supply	CEE 32 A
Number of poles	2
Voltage acc. EN 60309-2	20-25 V / 40-50 V (>400-500 Hz) green
Clock hour position	11 h
Identification colour	Green
Construction type	Equipment mounted socket outlet (under plaster)
Configuration	Closed cover
Colour	Grey
RAL-number	7035

### Dimension sheet



Amp.	16		32	
Pole	2	3	2	3
a	53	53	53	53
b	32	32	32	32
c	4,2	4,2	4,2	4,2
d	80	80	80	80
e	70	70	70	70
f	28	28	28	28
h	50	50	50	50
n	29	29	29	29
r	91	91	91	91

Befestigungsmaß = a + b, Flanschmaß = d + e