

PRODUCT DATA SHEET

Part number	11740RW
EAN	4015609178285
Manufacturer	WALTHER-WERKE
WEEE-Reg.-Number:	DE 22131895

Product description

MONDO panel socket straight 32A 3P 0h for low voltage with flange 80x70mm pure white



Similar image

Detailed product description

WALTHER Panel socket 32A 3P 24V 0h IP44
 low-voltage connector from the MONDO series
 made from PA6 material
 in pure white (RAL 9010)
 flange 80x70mm
 fixing center 53x32mm
 for channel installation

Ordering Information

Order unit	Piece
Customs number	85366990
Net weight	0,144 kg
Packing quantity (VPE)	10
Length of the packaging	0,385 m
Width of the packaging	0,19 m
Depth of the packaging	0,18 m
Gross weight(VPE)	1,642 kg

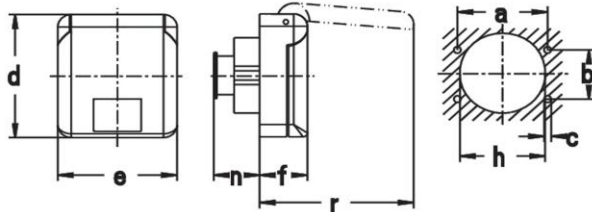
Classification system

Classification system	ETIM_6.0
ETIM Class	EC001318

Technical product data

Current supply	CEE 32 A
Number of poles	3
Voltage acc. EN 60309-2	20-25 V (50+60 Hz) violet
Identification colour	Violet
Construction type	Equipment mounted socket outlet (under plaster)
Configuration	Closed cover
Colour	White
RAL-number	9010

Dimension sheet



Amp.	16		32	
Pole	2	3	2	3
a	53	53	53	53
b	32	32	32	32
c	4,2	4,2	4,2	4,2
d	80	80	80	80
e	70	70	70	70
f	28	28	28	28
h	50	50	50	50
n	29	29	29	29
r	91	91	91	91

Befestigungsmaß = a + b, Flanschmaß = d + e