

PRODUCT DATA SHEET

Part number	11741PW
EAN	4015609178292
Manufacturer	WALTHER-WERKE
WEEE-Reg.-Number:	DE 22131895

Product description

MONDO panel socket straight 32A 3P 12h for low voltage with flange 80x70mm pearl white



Similar image

Detailed product description

WALTHER Panel socket 32A 3P 42V 12h IP44
 low-voltage connector from the MONDO series
 made from PA6 material
 in pearl white (RAL 1013)
 flange 80x70mm
 fixing center 53x32mm
 for channel installation

Ordering Information

Order unit	Piece
Customs number	85366990
Net weight	0,144 kg
Packing quantity (VPE)	10
Length of the packaging	0,385 m
Width of the packaging	0,19 m
Depth of the packaging	0,18 m
Gross weight(VPE)	1,642 kg

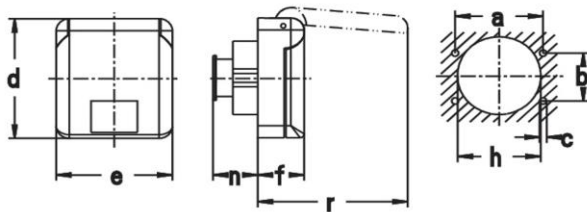
Classification system

Classification system	ETIM_6.0
ETIM Class	EC001318

Technical product data

Current supply	CEE 32 A
Number of poles	3
Voltage acc. EN 60309-2	40-50 V (50+60 Hz) white
Clock hour position	12 h
Identification colour	White
Construction type	Equipment mounted socket outlet (under plaster)
Configuration	Closed cover
Colour	White
RAL-number	1013

Dimension sheet



Amp.	16		32	
	2	3	2	3
a	53	53	53	53
b	32	32	32	32
c	4,2	4,2	4,2	4,2
d	80	80	80	80
e	70	70	70	70
f	28	28	28	28
h	50	50	50	50
n	29	29	29	29
r	91	91	91	91

Befestigungsmaß = a + b, Flanschmaß = d + e