

PRODUCT DATA SHEET

Part number **136504**

EAN	4015609011070
Manufacturer	WALTER-WERKE
WEEE-Reg.-Number:	DE 22131895

Product description

MONDO wall socket surface-mounted 32A 5P 4h
 in light grey



Similar image



Detailed product description

WALTER Wall socket 32A 5P 110V 4h IP44
 from the MONDO series
 made from PA6 material
 surface-mounted
 in light grey (RAL 7035)
 outer dimensions 115x72
 The flat cover allows a low housing height
 and is therefore suitable for prestigious areas.

Ordering Information

Order unit	Piece
Customs number	85366990
Net weight	0,38 kg
Packing quantity (VPE)	5
Length of the packaging	0,31 m
Width of the packaging	0,255 m
Depth of the packaging	0,15 m
Gross weight(VPE)	2,096 kg

Certificates

VDE certification	123021	
EAC certification	BY112.02.01.020 06089	

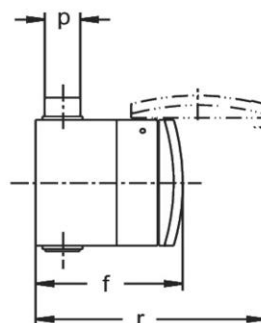
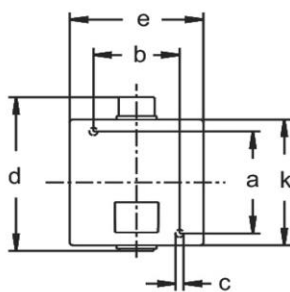
Classification system

Classification system	ETIM_6.0
ETIM Class	EC001318

Technical product data

Current supply	CEE 32 A
Number of poles	5
Voltage acc. EN 60309-2	110 V (50+60 Hz) yellow
Clock hour position	4 h
Identification colour	Yellow
Construction type	Wall mounted socket
Configuration	Closed cover
Colour	Grey
RAL-number	7035

Dimension sheet



Amp.	16			32		
Pole	3	4	5	3	4	5
a	73	73	73	73	73	73
b	58	58	58	58	58	58
c	5,5	5,5	5,5	5,5	5,5	5,5
d	114	114	114	114	114	114
e	90	90	90	90	90	90
f	92	92	92	98	98	98
k	90	90	90	90	90	90
n	1,5	1,5	1,5	1,5	1,5	1,5
p	8/20	8/20	8/20	8/20	8/20	8/20
r	150	150	150	160	160	160