

PRODUCT DATA SHEET

Part number 216306

EAN 4015609012770

Manufacturer WALTHER-WERKE

WEEE-Reg.-Nr: DE 22131895

Product description

MONDO Angled Plug 16A 3P 6h with back part in light grey



Product Image

Detailed product description

WALTHER Angled plug 16A 3P 230V 6h IP44
 from the MONDO series
 made from PA6 material
 with screw terminal
 back part in light grey (RAL 7035)





Ordering information

order unit	Piece
customs number	85366990
net weight	0.1064 kg
packing quantity (VPE)	10
length of the packaging	0.31 m
width of the packaging	0.163 m
depth of the packaging	0.113 m
gross weight(VPE)	1.176 kg

Conformities

CE conformity	v
RoHS directive	2011/65/EU
RoHS directive	2015/863/EU
REACH regulation	1907/2006

Certification

VDE/ENEC certification	40024787	
UL certification	No. E329476	
UL certification	No. E188992	
EAC certification	BY112.02.01.020 06090	

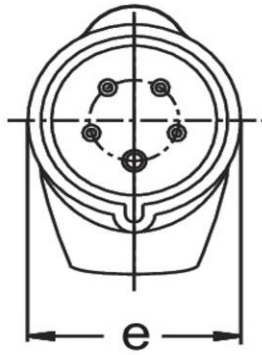
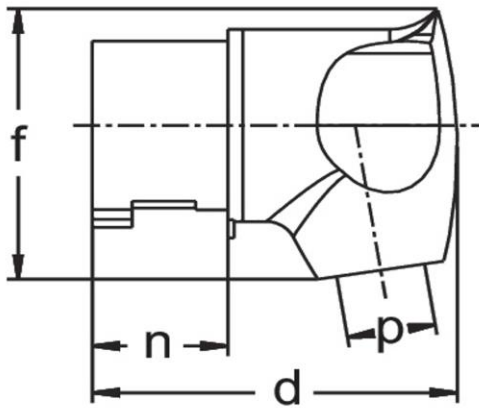
Classification system

classification system	ETIM_7.0
ETIM Class	EC000140

Technical product data

IEC-amperage	16 A
Amperage according to UL/CSA (for UL-version)	20 A
Number of poles	3
Voltage according to EN 60309-2	230 V (50+60Hz) blue
Clock hour position	6 h
Identification colour	Blue
Conductor cross-section	1 - 2.5 mm ²
Cable diameter	8 - 15 mm
Cable strip length	30 mm +/- 2 mm
Cable ferrules length	10 mm +/- 1 mm
Maximum torque terminal screw	0.8 Nm
Maximum torque cable gland	4 Nm
RAL-number	7035
Degree of protection (IP)	IP44
Connection system	Screwed terminal
Contact material	Brass standard
Cable entry	Anti-kink sleeve
Angle of plug	Right-angled
Material	Plastic
Inflammability class of insulation material according to with UL94	V2

Dimension sheet



Amp.	16
Pole	3
d	85
e	50,3
f	70
n	37
p	8/15