

PRODUCT DATA SHEET

Part number	410402
EAN	4015609018475
Manufacturer	WALTHER-WERKE
WEEE-Reg.-Number:	DE 22131895

Product description

Panel socket straight 16A 4P 2h with flange
75x75mm



Product image




Detailed product description

WALTHER Panel socket 16A 4P 50-500V 300-500Hz 2h IP44
 straight
 made from PA6 material
 finger-safe in accordance with BGV A3
 soft transition
 radius from flange to collar
 flange 75x75
 fixing center 60x60

Ordering Information

Order unit	Piece
Customs number	85366990
Net weight	0,16 kg
Packing quantity (VPE)	10
Length of the packaging	0,31 m
Width of the packaging	0,163 m
Depth of the packaging	0,113 m
Gross weight(VPE)	1,712 kg

Certificates

VDE certification	123017	
UL certification	No. E83342	
EAC certification	BY112.02.01.020 06089	

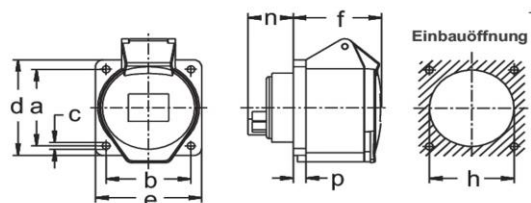
Classification system

Classification system	ETIM_6.0
ETIM Class	EC001317

Technical product data

IEC-amperage	16 A
Amperage acc. UL/CSA (for UL-version)	20 A
Number of poles	4
Voltage acc. EN 60309-2	50-500 V (>300-500 Hz) green
Clock hour position	2 h
Identification colour	Green
RAL-number	6025
Degree of protection (IP)	IP44
Connection system	Screwed terminal
Angle of plug	Straight
Material	Plastic
Military model	False
Flange size vertical	75 mm
Drill hole distance vertical	60 mm
Flange size horizontal	75 mm
Drill hole distance horizontal	60 mm

Dimension sheet



Amp.	16			32		
Pole	3	4	5	3	4	5
a	60	60	60	60	60	60
b	60	60	60	60	60	60
c	5,5	5,5	5,5	5,5	5,5	5,5
d	75	75	75	75	75	75
e	75	75	75	75	75	75
f	52	53	53	65	65	65
h	46	60	60	60	60	60
n	28	28	28	27	27	27
p	6	9	9	9	9	9

Passender Blindflansch, Art.-Nr. 10 015:	
a	60
b	60
c	5,2
d	75
e	75
p	6