

PRODUCT DATA SHEET

Part number 417304

EAN 4015609019298

Manufacturer WALTHER-WERKE

WEEE-Reg.-Number: DE 22131895

Product description

MONDO panel socket straight 16A 3P 4h with flange 80x70mm, also suitable for channel installation



Similar image

Detailed product description

WALTHER Panel socket 16A 3P 110V 4h IP44

straight

from the MONDO series

made from PA6 material

also suitable for channel installation

in light grey (RAL 7035)

flange 80x70



fixing center 53x32

The flat cover allows a low housing height and is therefore suitable for prestigious areas.

Ordering Information

Order unit	Piece
Customs number	85366990
Net weight	0,153 kg
Packing quantity (VPE)	10
Length of the packaging	0,31 m
Width of the packaging	0,163 m
Depth of the packaging	0,113 m
Gross weight(VPE)	1,642 kg

Certificates

VDE certification	123017	
EAC certification	BY112.02.01.020 06089	

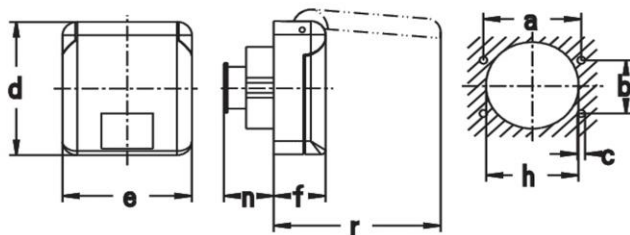
Classification system

Classification system	ETIM_6.0
ETIM Class	EC001318

Technical product data

Current supply	CEE 16 A
Number of poles	3
Voltage acc. EN 60309-2	110 V (50+60 Hz) yellow
Clock hour position	4 h
Identification colour	Yellow
Construction type	Equipment mounted socket outlet (under plaster)
Configuration	Closed cover
Colour	Grey
RAL-number	7035

Dimension sheet



Amp.	16
Pole	3
a	53
b	32
c	4,2
d	80
e	70
f	28
h	50
n	29
r	91

Befestigungsmaß = a + b,
 Flanschmaß = d + e