

## PRODUCT DATA SHEET

---

Part number	417309
EAN	4015609019311
Manufacturer	WALTHER-WERKE
WEEE-Reg.-Number:	DE 22131895

### Product description

---

MONDO panel socket straight 16A 3P 9h with flange 80x70mm, also suitable for channel installation



Similar image

### Detailed product description

---

WALTHER Panel socket 16A 3P 400V 9h IP44  
 straight  
 from the MONDO series  
 made from PA6 material  
 also suitable for channel installation  
 in light grey (RAL 7035)  
 flange 80x70  
 fixing center 53x32



The flat cover allows a low housing height and is therefore suitable for prestigious areas.

### Ordering Information

---

Order unit	Piece
Customs number	85366990
Net weight	0,153 kg
Packing quantity (VPE)	10
Length of the packaging	0,31 m
Width of the packaging	0,163 m
Depth of the packaging	0,113 m
Gross weight(VPE)	1,642 kg

## Certificates

VDE certification	123017	
EAC certification	BY112.02.01.020 06089	

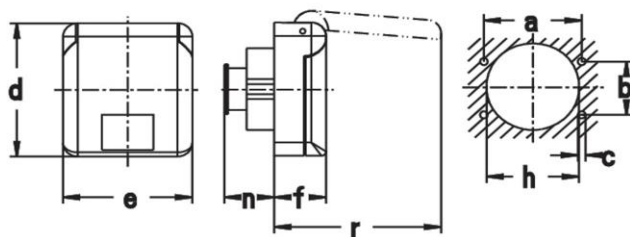
## Classification system

Classification system	ETIM_6.0
ETIM Class	EC001318

## Technical product data

Current supply	CEE 16 A
Number of poles	3
Voltage acc. EN 60309-2	400 V (50+60 Hz) red
Clock hour position	9 h
Identification colour	Red
Construction type	Equipment mounted socket outlet (under plaster)
Configuration	Closed cover
Colour	Grey
RAL-number	7035

## Dimension sheet



Amp.	16
Pole	3
a	53
b	32
c	4,2
d	80
e	70
f	28
h	50
n	29
r	91

Befestigungsmaß = a + b,  
Flanschmaß = d + e