

PRODUCT DATA SHEET

Part number 431404

EAN 4015609019878

Manufacturer WALTHER-WERKE

WEEE-Reg.-Number: DE 22131895

Product description

Panel socket straight 32A 4P 4h with screwed flange 80x80mm



Similar image



Detailed product description

WALTHER Panel socket 32A 4P 110V 4h IP44
 straight
 made from PA6 material
 finger-safe in accordance with BGV A3
 also suitable for cable channels with 80mm infeed width
 with screwed flange
 flange 80x80
 fixing center 60x60

Ordering Information

Order unit	Piece
Customs number	85366990
Net weight	0,23 kg
Packing quantity (VPE)	10
Length of the packaging	0,31 m
Width of the packaging	0,255 m
Depth of the packaging	0,15 m
Gross weight(VPE)	2,496 kg

Certificates

VDE certification	123021	
EAC certification	BY112.02.01.020 06089	

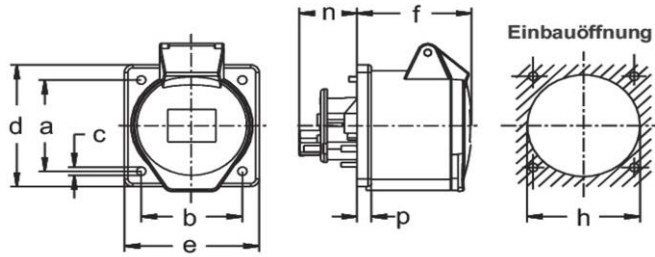
Classification system

Classification system	ETIM_6.0
ETIM Class	EC001317

Technical product data

IEC-amperage	32 A
Amperage acc. UL/CSA (for UL-version)	30 A
Number of poles	4
Voltage acc. EN 60309-2	110 V (50+60 Hz) yellow
Clock hour position	4 h
Identification colour	Yellow
RAL-number	1018
Degree of protection (IP)	IP44
Connection system	Screwed terminal
Angle of plug	Straight
Material	Plastic
Military model	False
Flange size vertical	80 mm
Drill hole distance vertical	60 mm
Flange size horizontal	80 mm
Drill hole distance horizontal	60 mm

Dimension sheet



Amp.	16		32		
	4	5	3	4	5
a	60	60	60	60	60
b	60	60	60	60	60
c	5,5	5,5	5,5	5,5	5,5
d	80	80	80	80	80
e	80	80	80	80	80
f	60	60	60	60	60
h	67	67	71	71	71
n	32	32	32	32	32
p	8,5	8,5	8,5	8,5	8,5