

PRODUCT DATA SHEET

Part number 439410

EAN 4015609161171

Manufacturer WALTHER-WERKE

WEEE-Reg.-Number: DE 22131895

Product description

Waterproof panel socket straight 32A 4P 10h with flange 75x75mm



Similar image




Detailed product description

WALTHER Panel socket 32A 4P 50-500V 100-300Hz 10h IP44
 straight
 made from PA6 material
 finger-safe in accordance with BGV A3
 soft transition
 radius from flange to collar
 flange 75x75
 fixing center 60x60

Ordering Information

Order unit	Piece
Customs number	85366990
Net weight	0,252 kg
Packing quantity (VPE)	10
Length of the packaging	0,31 m
Width of the packaging	0,255 m
Depth of the packaging	0,15 m
Gross weight(VPE)	2,716 kg

Certificates

VDE certification	123021	
UL certification	No. E83342	
EAC certification	BY112.02.01.020 06089	

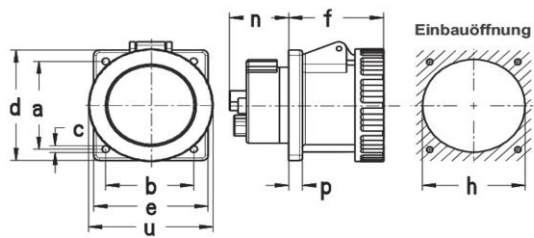
Classification system

Classification system	ETIM_6.0
ETIM Class	EC001317

Technical product data

IEC-amperage	32 A
Amperage acc. UL/CSA (for UL-version)	30 A
Number of poles	4
Voltage acc. EN 60309-2	50-500 V (100-300 Hz) green
Clock hour position	10 h
Identification colour	Green
RAL-number	6025
Degree of protection (IP)	IP67
Connection system	Screwed terminal
Angle of plug	Straight
Material	Plastic
Military model	False
Flange size vertical	75 mm
Drill hole distance vertical	60 mm
Flange size horizontal	75 mm
Drill hole distance horizontal	60 mm

Dimension sheet



Amp.	16			32			63		
Pole	3	4	5	3	4	5	3	4	5
a	47	60	60	60	60	60	85	85	85
b	47	60	60	60	60	60	77	77	77
c	5,5	5,5	5,5	5,5	5,5	5,5	6,5	6,5	6,5
d	62	75	75	75	75	75	107	107	107
e	62	75	75	75	75	75	100	100	100
f	52	52	52	65	65	65	83	83	83
h	46	60	60	60	60	60	90	90	90
n	28	28	28	27	27	27	52	52	52
p	6	9	9	9	9	9	12	12	12
u	72	81	88	96	96	103	110	110	110