

PRODUCT DATA SHEET

Part number 615402

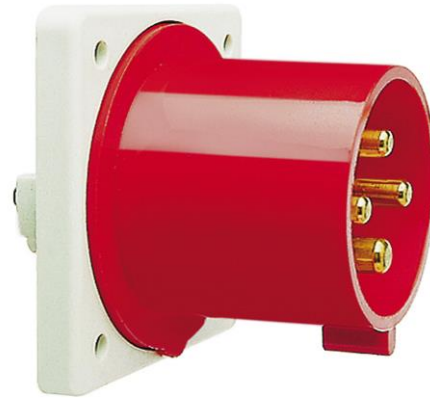
EAN 4015609023653

Manufacturer WALTHER-WERKE

WEEE-Reg.-Number: DE 22131895

Product description

Panel appliance inlet straight 16A 4P 2h with
screwed flange 80x80mm



Similar image




Detailed product description

WALTHER Panel appliance inlet 16A 4P 50-500V 300-500Hz 2h IP44
 straight
 made from PA6 material
 with screwed flange
 flange 80x80
 fixing center 60x60

Ordering Information

Order unit	Piece
Customs number	85366990
Net weight	0,131 kg
Packing quantity (VPE)	10
Length of the packaging	0,31 m
Width of the packaging	0,163 m
Depth of the packaging	0,113 m
Gross weight(VPE)	1,422 kg

Certificates

VDE certification	125073	
UL certification	No. E83342	
UL certification	No. E188992	

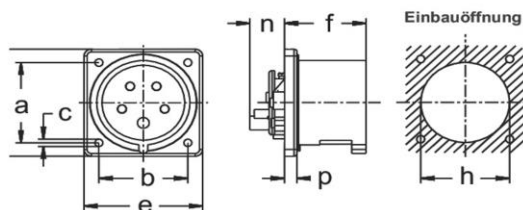
Classification system

Classification system	ETIM_6.0
ETIM Class	EC001319

Technical product data

IEC-amperage	16 A
Amperage acc. UL/CSA (for UL-version)	20 A
Number of poles	4
Voltage acc. EN 60309-2	50-500 V (>300-500 Hz) green
Clock hour position	2 h
Identification colour	Green
RAL-number	6025
Degree of protection (IP)	IP44
Connection system	Screwed terminal
Connection type	Built-up device plug
Angle of plug	Straight
Material	Plastic

Dimension sheet



Amp.	16			32		
Pole	3	4	5	3	4	5
a	47	60	60	60	60	60
b	47	60	60	60	60	60
c	5,5	5,5	5,5	5,5	5,5	5,5
d	62	80	80	80	80	80
e	62	80	80	80	80	80
f	47	47	47	56	56	56
h	50	67	67	71	71	71
n	22	22	22	22	22	22
p	8,5	8,5	8,5	8,5	8,5	8,5

Art. 600 ... :	
Amp.	16
Pole	3
a	60
b	60
c	5,5
d	75
e	75
f	47
h	50
n	22
p	8,5