

PRODUCT DATA SHEET

Part number 635509

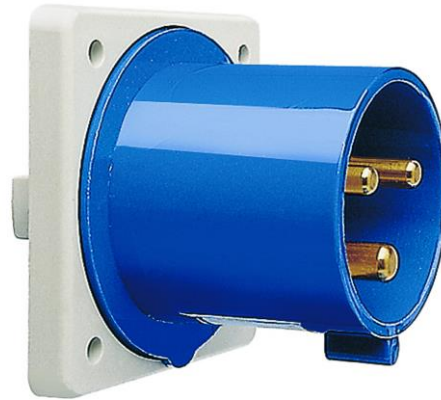
EAN 4015609024582

Manufacturer WALTHER-WERKE

WEEE-Reg.-Number: DE 22131895

Product description

Panel appliance inlet straight 32A 5P 9h with
screwed flange 80x80mm



Similar image




Detailed product description

WALTHER Panel appliance inlet 32A 5P 230V 9h IP44
 straight
 made from PA6 material
 with screwed flange
 flange 80x80
 fixing center 60x60

Ordering Information

Order unit	Piece
Customs number	85366990
Net weight	0,189 kg
Packing quantity (VPE)	10
Length of the packaging	0,31 m
Width of the packaging	0,195 m
Depth of the packaging	0,14 m
Gross weight(VPE)	2,038 kg

Certificates

VDE certification	126147	
UL certification	No. E83342	
UL certification	No. E188992	

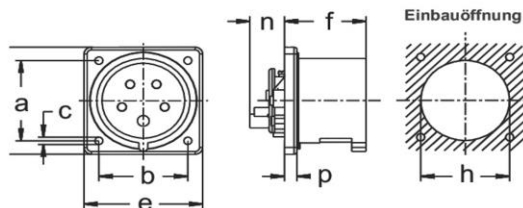
Classification system

Classification system	ETIM_6.0
ETIM Class	EC001319

Technical product data

IEC-amperage	32 A
Amperage acc. UL/CSA (for UL-version)	30 A
Number of poles	5
Voltage acc. EN 60309-2	230 V (50+60 Hz) blue
Clock hour position	9 h
Identification colour	Blue
RAL-number	5002
Degree of protection (IP)	IP44
Connection system	Screwed terminal
Connection type	Built-up device plug
Angle of plug	Straight
Material	Plastic

Dimension sheet



Amp.	16			32		
Pole	3	4	5	3	4	5
a	47	60	60	60	60	60
b	47	60	60	60	60	60
c	5,5	5,5	5,5	5,5	5,5	5,5
d	62	80	80	80	80	80
e	62	80	80	80	80	80
f	47	47	47	56	56	56
h	50	67	67	71	71	71
n	22	22	22	22	22	22
p	8,5	8,5	8,5	8,5	8,5	8,5

Art. 600 ... :	
Amp.	16
Pole	3
a	60
b	60
c	5,5
d	75
e	75
f	47
h	50
n	22
p	8,5