

PRODUCT DATA SHEET

Part number 710621

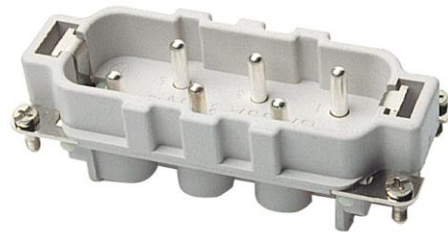
EAN 4015609028047

Manufacturer WALTHER-WERKE

WEEE-Reg.-Number: DE 22131895

Product description

Male insert from the series BA6 and BA12 with wire protection and a numbering of 1-6



Product image

Detailed product description

WALTHER Male insert
 from the series BA6 and BA12
 with screw terminal
 and wire protection
 terminal cross-section 0,5-6,0qmm (20-10AWG)

Ordering Information

Order unit	Piece
Customs number	85366990
Net weight	0,086 kg
Packing quantity (VPE)	10
Length of the packaging	
Width of the packaging	
Depth of the packaging	
Gross weight(VPE)	0,86 kg

Classification system

Classification system ETIM-6.0

ETIM Class

EC000438

Technical product data

Contact type	Pin
Shape	Rectangular
Number of poles	6
Material connector of connector insert	Thermoplastic
Rated current I_n	35 A
Ambient temperature	-40 - 125 °C
Rated voltage	500 V
Rated surge voltage	6 kV
Over voltage category	III
Pollution degree	3
Type of electric connection	Screw connection
With wire protection	✓
Connectable conductor cross section fine-strand without cable end sleeve	0,5 - 6 mm ²
Connectable conductor cross section fine-strand with cable end sleeve	0,5 - 6 mm ²
Connectable conductor cross section multi-wired	0,5 - 6 mm ²
Material of contact surface	Silver
Material of contact insert	Plastic
Material contact	Other copper alloys
Inflammability class of insulation material acc. with UL94	V0
With protective conductor	✓

Dimension sheet

